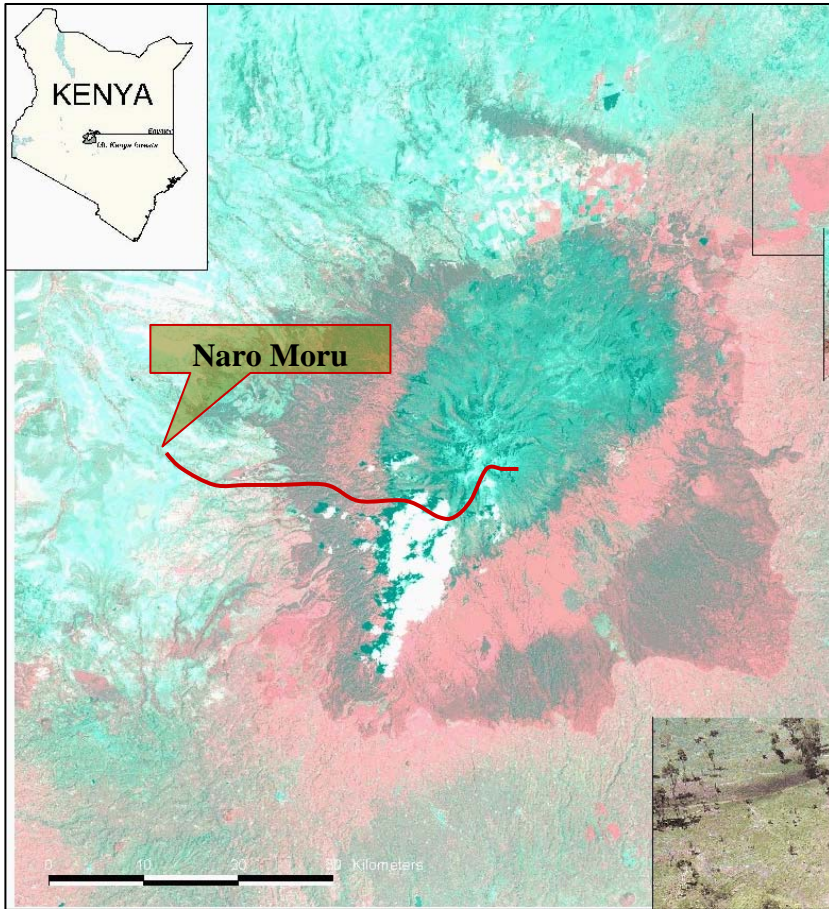


Afrique de l'Est 1988, 1991



Mont Kenya, 1988



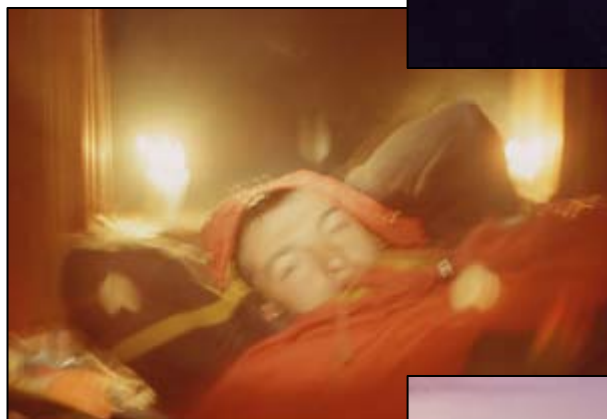
Camp de base



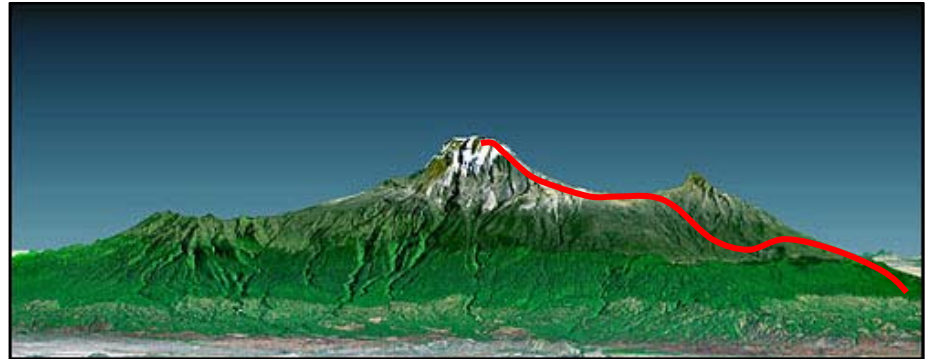
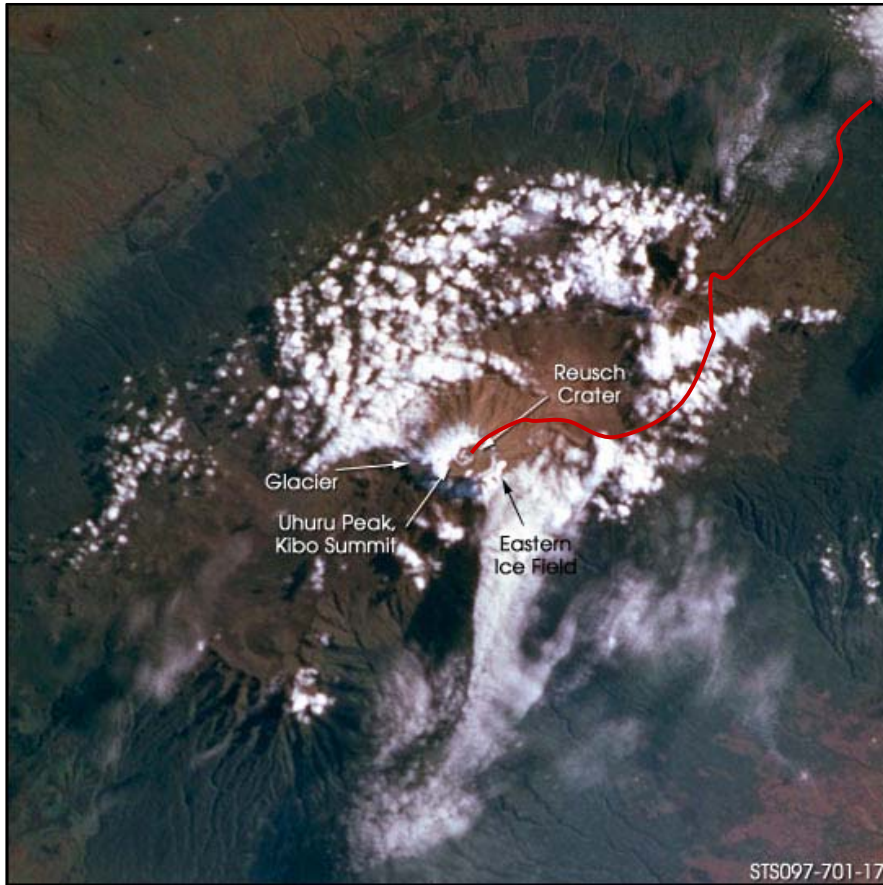
Longue route Vers Met-station



Au-dessus des nuages



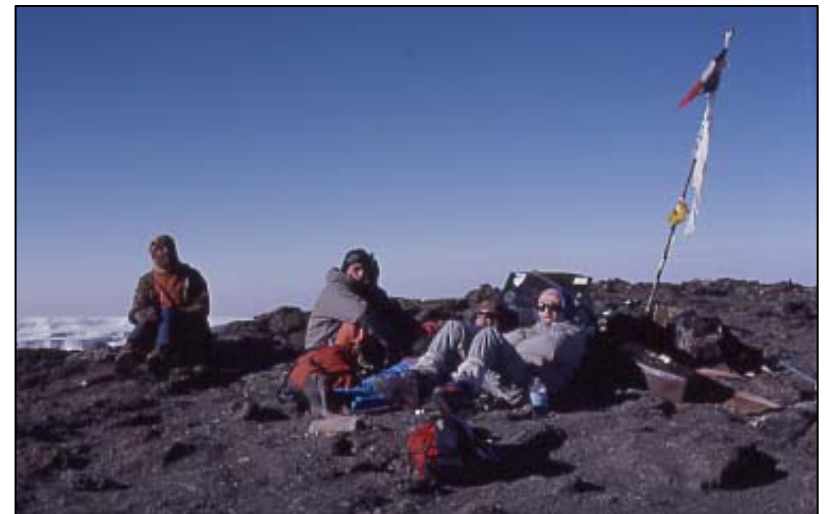
Mont Kilimandjaro, 1988



De la forêt humide au plateau aride.

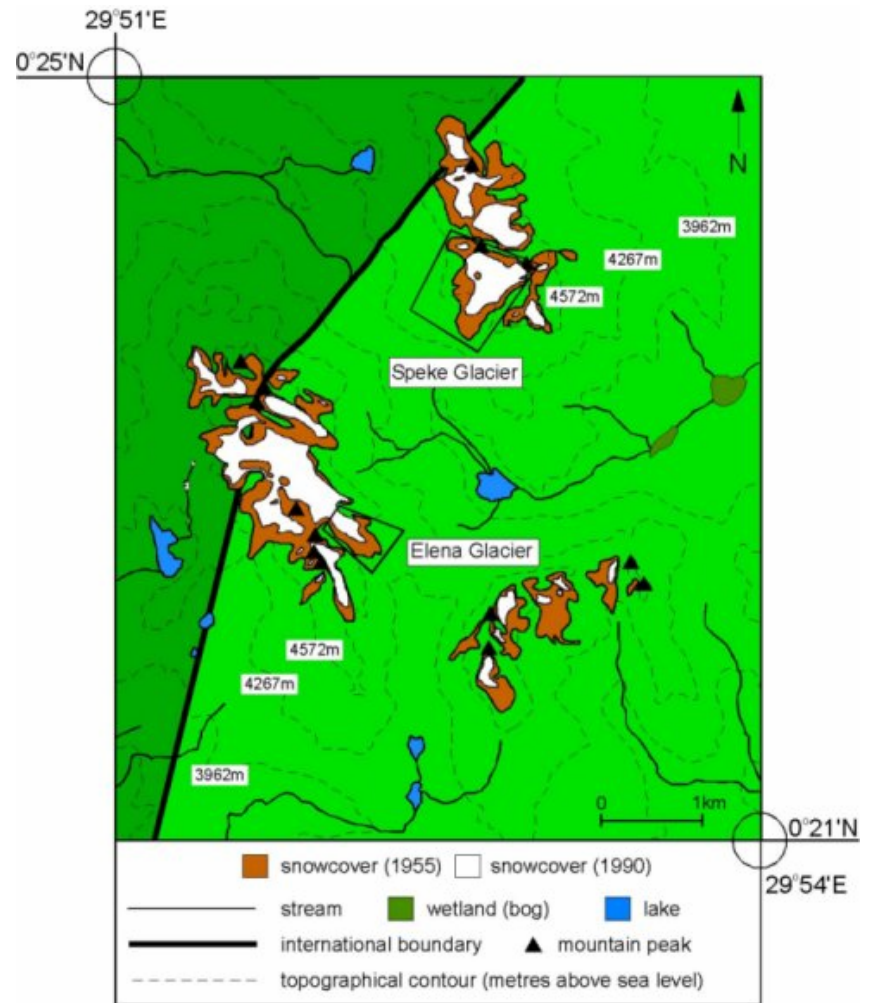


La « tourist highway »

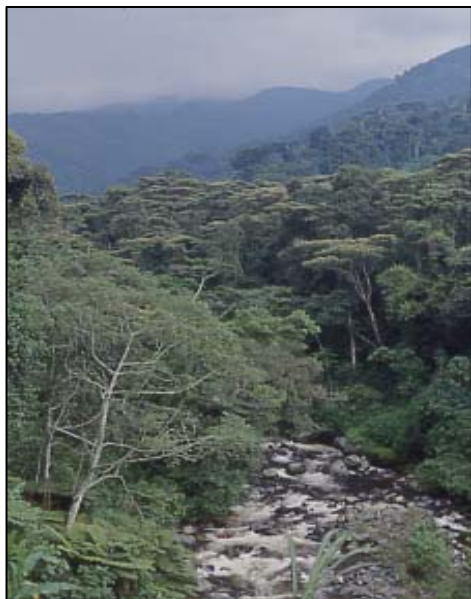


Le sommet
Les derniers glaciers

Ruwenzori, 1991



Les montagnes de la Lune



Lobelis et Seneçons



Monts Speeke, Pointe Margarita

